

# Adapters and Closures



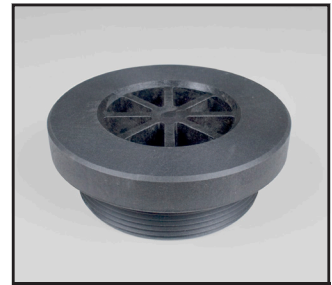
**1.25" Clack Dome  
Closure  
Order No. D1338-01**



**2½" - 8  
Closure  
Order No. Q7004**



**2.5 x 2.5 1.050  
Adapter  
Order No. Q1022**



**4" - 8 UN  
Closure  
Order No. C610226**



**4" - 8 UN x 2½" - 8  
Adapter  
Order No. C610227**



**6" Flange  
Closure  
Order No. C610224**



**6" Flange x 3" FNPT  
x 3" FNPT Adapter  
Order No. C610222**



**6" Flange x 4" - 8 UN  
Adapter  
Order No. C610225**

ORDER NUMBER	DESCRIPTION	MATERIAL	QTY/CTN	WT/CTN
D1338-01	Closure 1.25" Dome	Glass Filled Composite	250	28 lb
Q7004	Closure 2½" - 8	ABS	160	31 lb
Q1022	Adapter 2.5 x 2.5 1.050	Glass Filled Composite	24	16 lb
C610226	4" - 8 UN Closure	Glass Filled Composite	1	1 lb
C610227	Adapter 4" - 8 UN x 2½" - 8	Glass Filled Composite	1	.75 lb
C610224	6" Flange Closure	Glass Filled Composite	1	5 lb
C610222	6" Flange x 3" FNPT x 3" FNPT	Glass Filled Composite	1	5.5 lb
C610225	6" Flange x 4" - 8 UN	Glass Filled Composite	1	4.2 lb