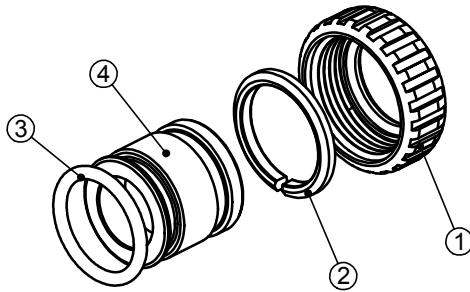


**Clack Order No. V3007-03LF**  
**Description: WS1 Fitting 3/4" Brass Sweat Asy LF**

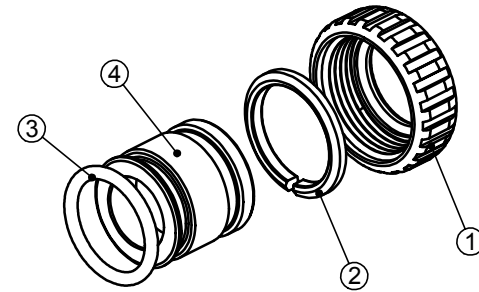
Drawing No.	Order No.	Description	Quantity
1	V3151	WS1 Nut 1" Quick Connect	2
2	V3150	WS1 Split Ring	2
3	V3105	O-Ring 215	2
4	V3188-01LF	WS1 Ftg 3/4 Brass Sweat LF	2



Form No. V3115-06LF • 9/21/2021

**Clack Order No. V3007-03LF**  
**Description: WS1 Fitting 3/4" Brass Sweat Asy LF**

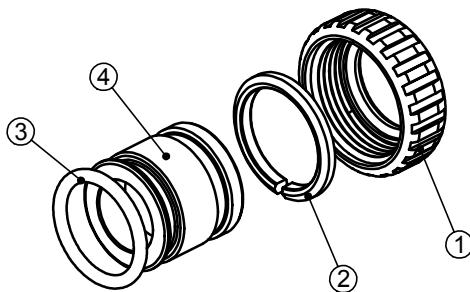
Drawing No.	Order No.	Description	Quantity
1	V3151	WS1 Nut 1" Quick Connect	2
2	V3150	WS1 Split Ring	2
3	V3105	O-Ring 215	2
4	V3188-01LF	WS1 Ftg 3/4 Brass Sweat LF	2



Form No. V3115-06LF • 9/21/2021

**Clack Order No. V3007-03LF**  
**Description: WS1 Fitting 3/4" Brass Sweat Asy LF**

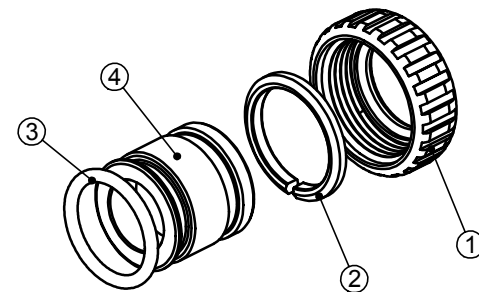
Drawing No.	Order No.	Description	Quantity
1	V3151	WS1 Nut 1" Quick Connect	2
2	V3150	WS1 Split Ring	2
3	V3105	O-Ring 215	2
4	V3188-01LF	WS1 Ftg 3/4 Brass Sweat LF	2



Form No. V3115-06LF • 9/21/2021

**Clack Order No. V3007-03LF**  
**Description: WS1 Fitting 3/4" Brass Sweat Asy LF**

Drawing No.	Order No.	Description	Quantity
1	V3151	WS1 Nut 1" Quick Connect	2
2	V3150	WS1 Split Ring	2
3	V3105	O-Ring 215	2
4	V3188-01LF	WS1 Ftg 3/4 Brass Sweat LF	2



Form No. V3115-06LF • 9/21/2021

## Clack Order No. V3007-03LF

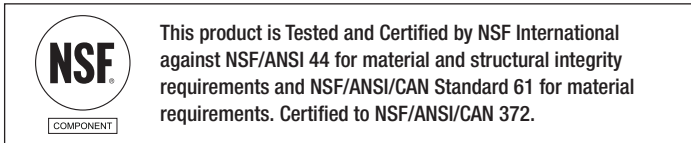
### Description: WS1 Fitting 3/4" Brass Sweat Asy LF

HYDROCARBONS SUCH AS VASELINE®, PETROLEUM JELLY, KEROSENE, BENZENE, GASOLINE, ETC., WILL DAMAGE PRODUCTS THAT CONTAIN O-RINGS OR PLASTIC COMPONENTS. EXPOSURE TO SUCH HYDROCARBONS MAY CAUSE THE PRODUCTS TO LEAK. DO NOT USE CLACK CONTROL VALVE PRODUCT(S) ON WATER SUPPLIES THAT CONTAIN HYDROCARBONS SUCH AS KEROSENE, BENZENE, GASOLINE, ETC.

#### Fitting Installation Instructions:

- Installation fittings are designed to accommodate minor plumbing misalignments, but are not designed to support the weight of a system or the plumbing.
- After soldering is complete wipe solder and solder flux from the outside of the fitting. Some solder or solder flux may deteriorate the o-ring or split ring.
- Allow the fitting to cool before attaching to the control valve and before attaching the nut, split ring and o-ring.
- Slide nut on first, then the split ring and o-ring.
- Hand tighten the nut only.

**NOTE:** This fitting has been verified by the Water Quality Association to contain less than 0.25% lead content. These fittings suitability for use in California have not been determined under California Proposition 65 and therefore these fittings should not be installed in California.



Form No. V3115-06LF • 9/21/2021

## Clack Order No. V3007-03LF

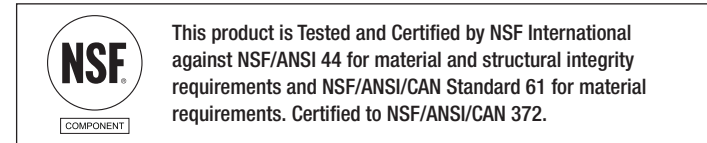
### Description: WS1 Fitting 3/4" Brass Sweat Asy LF

HYDROCARBONS SUCH AS VASELINE®, PETROLEUM JELLY, KEROSENE, BENZENE, GASOLINE, ETC., WILL DAMAGE PRODUCTS THAT CONTAIN O-RINGS OR PLASTIC COMPONENTS. EXPOSURE TO SUCH HYDROCARBONS MAY CAUSE THE PRODUCTS TO LEAK. DO NOT USE CLACK CONTROL VALVE PRODUCT(S) ON WATER SUPPLIES THAT CONTAIN HYDROCARBONS SUCH AS KEROSENE, BENZENE, GASOLINE, ETC.

#### Fitting Installation Instructions:

- Installation fittings are designed to accommodate minor plumbing misalignments, but are not designed to support the weight of a system or the plumbing.
- After soldering is complete wipe solder and solder flux from the outside of the fitting. Some solder or solder flux may deteriorate the o-ring or split ring.
- Allow the fitting to cool before attaching to the control valve and before attaching the nut, split ring and o-ring.
- Slide nut on first, then the split ring and o-ring.
- Hand tighten the nut only.

**NOTE:** This fitting has been verified by the Water Quality Association to contain less than 0.25% lead content. These fittings suitability for use in California have not been determined under California Proposition 65 and therefore these fittings should not be installed in California.



Form No. V3115-06LF • 9/21/2021

## Clack Order No. V3007-03LF

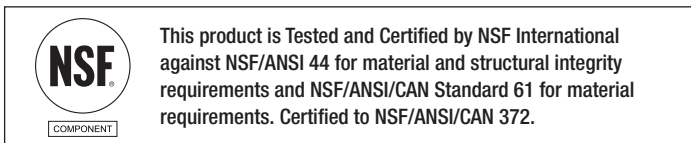
### Description: WS1 Fitting 3/4" Brass Sweat Asy LF

HYDROCARBONS SUCH AS VASELINE®, PETROLEUM JELLY, KEROSENE, BENZENE, GASOLINE, ETC., WILL DAMAGE PRODUCTS THAT CONTAIN O-RINGS OR PLASTIC COMPONENTS. EXPOSURE TO SUCH HYDROCARBONS MAY CAUSE THE PRODUCTS TO LEAK. DO NOT USE CLACK CONTROL VALVE PRODUCT(S) ON WATER SUPPLIES THAT CONTAIN HYDROCARBONS SUCH AS KEROSENE, BENZENE, GASOLINE, ETC.

#### Fitting Installation Instructions:

- Installation fittings are designed to accommodate minor plumbing misalignments, but are not designed to support the weight of a system or the plumbing.
- After soldering is complete wipe solder and solder flux from the outside of the fitting. Some solder or solder flux may deteriorate the o-ring or split ring.
- Allow the fitting to cool before attaching to the control valve and before attaching the nut, split ring and o-ring.
- Slide nut on first, then the split ring and o-ring.
- Hand tighten the nut only.

**NOTE:** This fitting has been verified by the Water Quality Association to contain less than 0.25% lead content. These fittings suitability for use in California have not been determined under California Proposition 65 and therefore these fittings should not be installed in California.



Form No. V3115-06LF • 9/21/2021

## Clack Order No. V3007-03LF

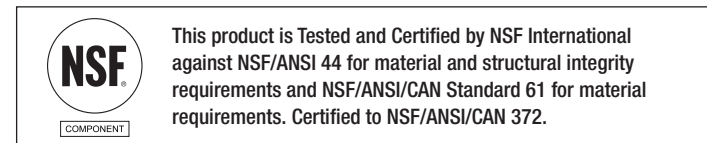
### Description: WS1 Fitting 3/4" Brass Sweat Asy LF

HYDROCARBONS SUCH AS VASELINE®, PETROLEUM JELLY, KEROSENE, BENZENE, GASOLINE, ETC., WILL DAMAGE PRODUCTS THAT CONTAIN O-RINGS OR PLASTIC COMPONENTS. EXPOSURE TO SUCH HYDROCARBONS MAY CAUSE THE PRODUCTS TO LEAK. DO NOT USE CLACK CONTROL VALVE PRODUCT(S) ON WATER SUPPLIES THAT CONTAIN HYDROCARBONS SUCH AS KEROSENE, BENZENE, GASOLINE, ETC.

#### Fitting Installation Instructions:

- Installation fittings are designed to accommodate minor plumbing misalignments, but are not designed to support the weight of a system or the plumbing.
- After soldering is complete wipe solder and solder flux from the outside of the fitting. Some solder or solder flux may deteriorate the o-ring or split ring.
- Allow the fitting to cool before attaching to the control valve and before attaching the nut, split ring and o-ring.
- Slide nut on first, then the split ring and o-ring.
- Hand tighten the nut only.

**NOTE:** This fitting has been verified by the Water Quality Association to contain less than 0.25% lead content. These fittings suitability for use in California have not been determined under California Proposition 65 and therefore these fittings should not be installed in California.



Form No. V3115-06LF • 9/21/2021