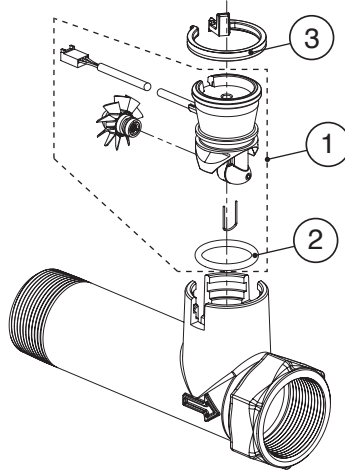
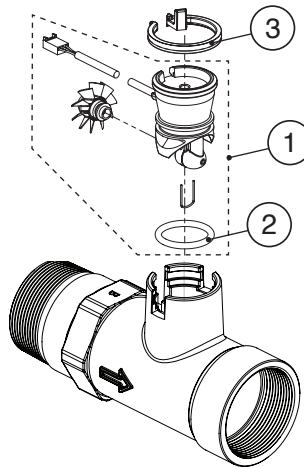


**CI 1.5 INCH METER NPT ASY 15 FT, CI 1.5 INCH METER BSPT ASY 15 FT,
 CI 2 INCH METER NPT ASY 15 FT or CI 2 INCH METER BSPT ASY 15 FT,
 CI 3 INCH METER NPT ASY 15 FT or CI 3 INCH METER BSPT ASY 15 FT**

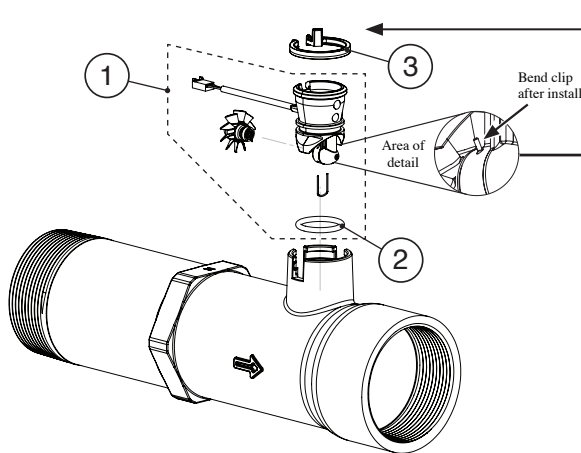
1.5 INCH METER



2 INCH METER



3 INCH METER



For proper installation see reverse side.

Service or replace the turbine by:

1. Turn the bypass for the system off and relieve the pressure on the system.
2. Press downward on the remote meter assembly to relieve tension on the retaining clip P1022156. Remove the clip and take the meter assembly out of the housing.
3. Service or replace the 01020410 Remote Meter Assembly and place it back in the meter housing.
4. Re-install the meter retaining clip P1022156.
5. Open the bypass for the system slowly to bring back into service and check to be sure you have no water leaks.

Drawing No.	Part No.	Description	Quantity		
			1.5"	2"	3"
1	01020410	REMOTE METER ASSEMBLY CULLIGAN	1	1	1
2	P1020477	O-RING 215 (10 Pack)	1	1	1
3	P1022156	15/2/3 METER RETAINING CLIP (10 PACK)	1	1	1

The meter assemblies contain a cone shaped flow straightener inside the housing. If the flow straightener is missing contact Culligan for replacement part number.

**CI 1.5 INCH METER NPT ASY 15 FT, CI 1.5 INCH METER BSPT ASY 15 FT,
CI 2 INCH METER NPT ASY 15 FT or CI 2 INCH METER BSPT ASY 15 FT,
CI 3 INCH METER NPT ASY 15 FT or CI 3 INCH METER BSPT ASY 15 FT**

Make connections using the following:

- For CI 1.5" METER NPT Assembly use 1.5" NPT pipe and fittings.
- For CI 1.5" METER BSPT Assembly use 1.5" BSPT pipe and fittings.
- For CI 2" METER NPT Assembly use 2" NPT pipe and fittings.
- For CI 2" METER BSPT Assembly use 2" BSPT pipe and fittings.
- For CI 3" METER NPT Assembly use 3" NPT pipe and fittings.
- For CI 3" METER BSPT Assembly use 3" BSPT pipe and fittings.

WHEN INSTALLING THE METER, MAKE SURE THE ARROW ON THE METER BODY IS GOING THE SAME DIRECTION AS THE WATER FLOW. THE METER CAN BE INSTALLED IN HORIZONTAL OR "UPFLOW" VERTICAL APPLICATIONS.

HYDROCARBONS SUCH AS VASELINE®, PETROLEUM JELLY, KEROSENE, BENZENE, GASOLINE, ETC., WILL DAMAGE PRODUCTS THAT CONTAIN O-RINGS OR PLASTIC COMPONENTS. EXPOSURE TO SUCH HYDROCARBONS MAY CAUSE THE PRODUCTS TO LEAK. DO NOT USE CLACK CONTROL VALVE PRODUCT(S) ON WATER SUPPLIES THAT CONTAIN HYDROCARBONS SUCH AS KEROSENE, BENZENE, GASOLINE, ETC.

THIS WATER METER SHOULD NOT BE USED AS THE PRIMARY MONITORING DEVICE FOR CRITICAL OR HEALTH EFFECT APPLICATIONS.

**OPERATING PRESSURES: 20 PSI MINIMUM - 125 PSI MAXIMUM (1.4 - 8.6 bar)
OPERATING TEMPERATURE 40°F MINIMUM - 110°F MAXIMUM (4° - 43°C)**

Wiring:

- The meter must be supplied with a DC voltage between 4 and 24 volts
- The RED wire is positive
- The BLACK wire is negative
- The WHITE wire is the meter output

	1.5" Meter Assemblies	2" Meter Assemblies	3" Meter Assembly
Calibration Factor	37 pulses per gallon 9.8 pulses per liter	20 pulses per gallon 5.3 pulses per liter	8 pulses per gallon 2.1 pulses per liter
Pressure Drop	75 gpm is 2.7 PSI 284.1 lpm (0.2 bar)	150 gpm is 3.6 PSI 568 lpm (0.3 bar)	350 gpm is 7.3 PSI 1,325 lpm (0.50 bar)
Meter Flow Range	0.5-75 gpm + 5% 2 - 284 lpm (output signal 0.4 Hz to 47.5 Hz)	1.5-150 gpm + 5% 5.7 - 568 lpm (output signal 0.4 Hz to 47.5 Hz)	3.5 - 350 gpm + 5% 13 - 1,325 lpm (output signal 0.46 Hz to 46.6 Hz)

NOTE: Not all flow monitors will register accurately at either the low or high flow range of this meter.

