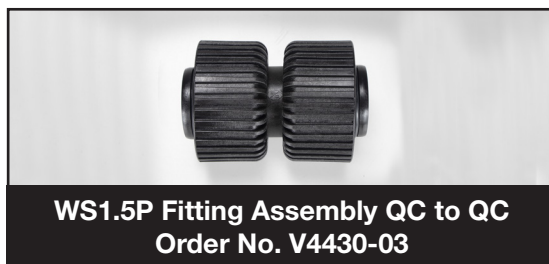


Water Specialist 1.5" Plastic No Hard Water Bypass



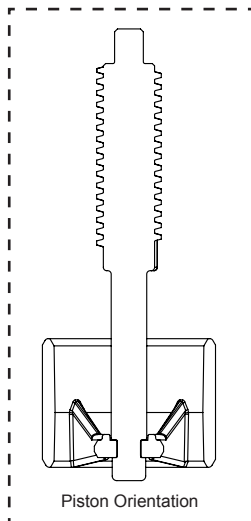
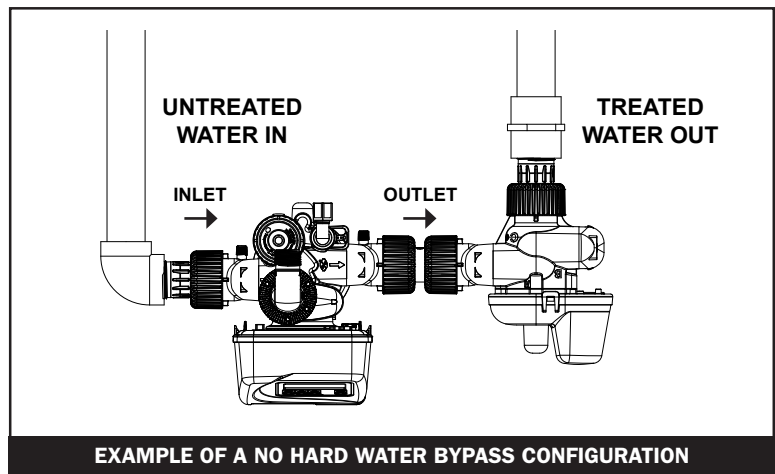
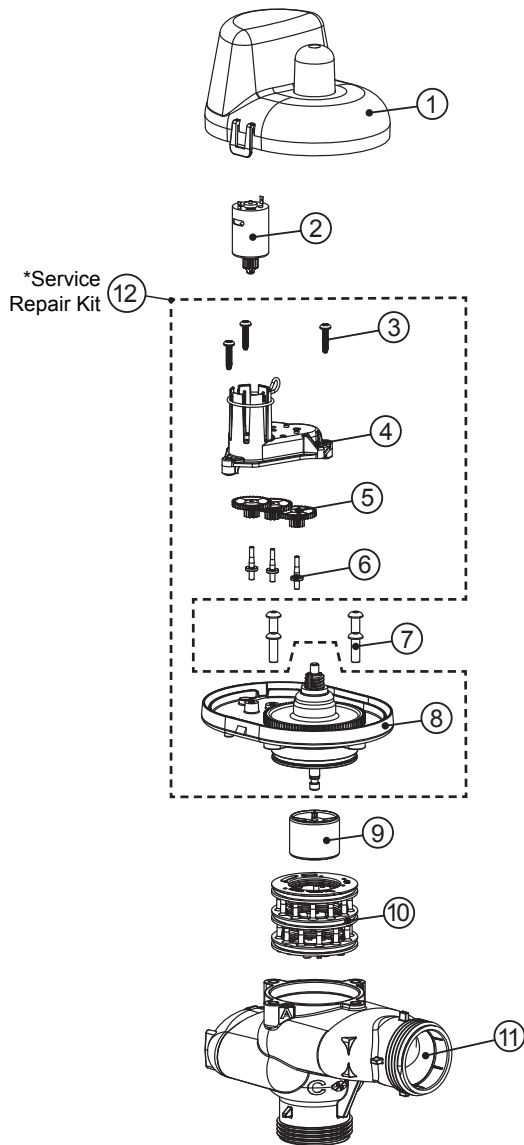
- Fiber Reinforced Composite Material
- Utilizes WS1.5P Control Valve Fittings
- Hydraulically balanced piston valve
- Provides no raw water bypass during regeneration
- Provides choices of treated or non-treated water regeneration
- Proven and reliable Clack DC drive assembly
- Low voltage drive assembly controlled by valve's circuit board
- Flow from female inlet to outlet has (Cv 32.19) has a 3.47 PSI drop at 60 GPM



- Operating Pressures:
20 PSI Minimum
125 PSI Maximum
- Operating Temperatures:
40°F Minimum
110°F Maximum

ORDER NO. V3035 • DESCRIPTION: WS1.5P NO HARD WATER BYPASS

Drawing No.	Order No.	Description	Quantity
1	V3073	MAV/NOHWBY COVER ASY	1
2	V3476	WS MOTOR ASY 8 FT	1
3	V3592	SCREW #8-1 PHPN T-25 SS	3
4	V3262-01	WS REDUCTION GEAR COVER ASY	1
5	V3110-01	WS1 DRIVE REDUCING GEAR PLAIN	3
6	V3264	WS2 BYPASS REDUCTION GEAR AXLE	3
7	V3527	SCREW 1/4-20 X 3/4 BHSCS SS (5/32" HEX ALLEN WRENCH REQUIRED)	4
8	V3072	MAV/NOHWBY 1/125/15 DRIVE ASY	1
9	V3506-01	MAV/NOHRD 1/125/15 PISTON	1
10	V3074	MAV 1/125/15 STACK ASY	1
11	V4380	WS15P NHWB BY BONDED BODY	1
Not Shown	V3805	STRAIN RELIEF COVER KIT	1
*12	V3042	WS1/1.25/1.5 MAV & NHWB SERVICE PACK	



•Operating Pressures:
20 PSI Minimum / 125 PSI Maximum

•Operating Temperatures:
40°F Minimum / 110°F Maximum